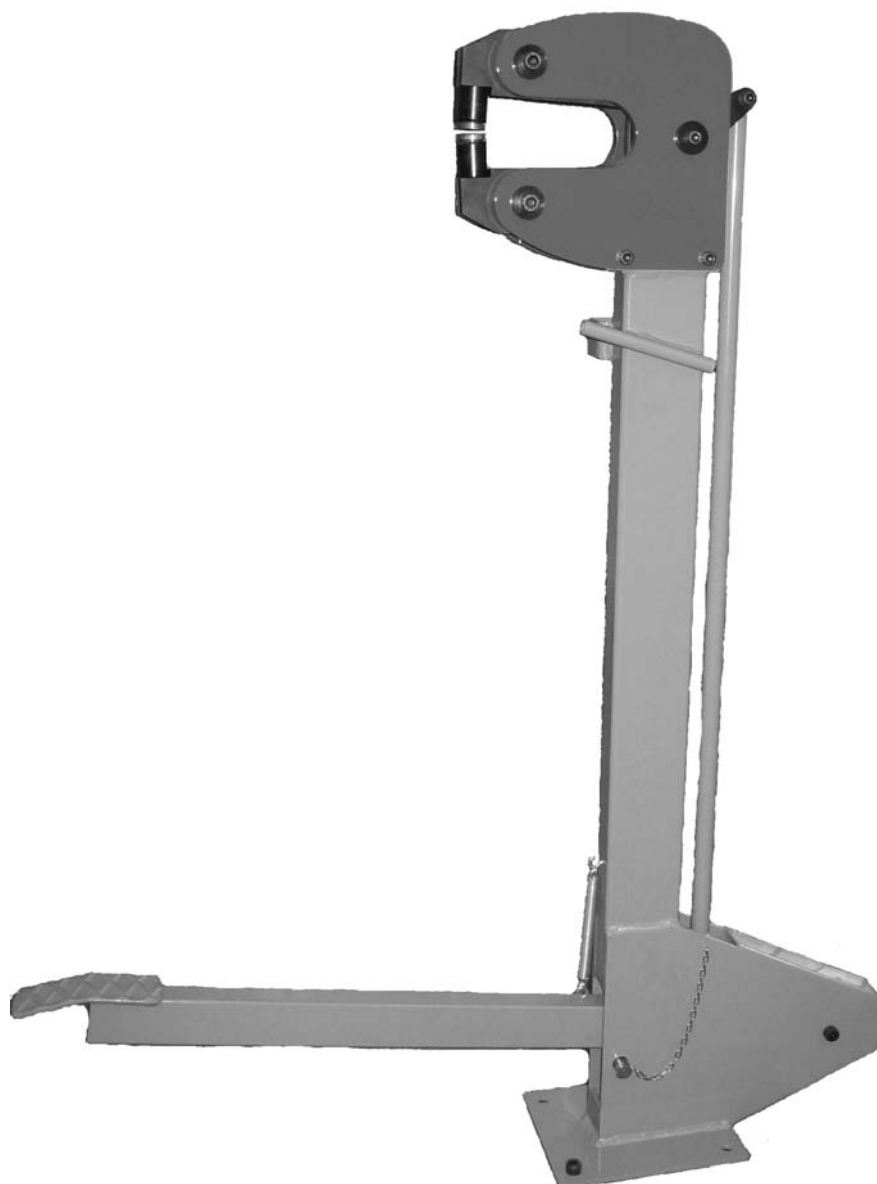


Mounting instruction

Preliminary version

KSM-155 Pro

Shrinker & Stretcher



A product from:

JS-TOOLS

V.07.B01

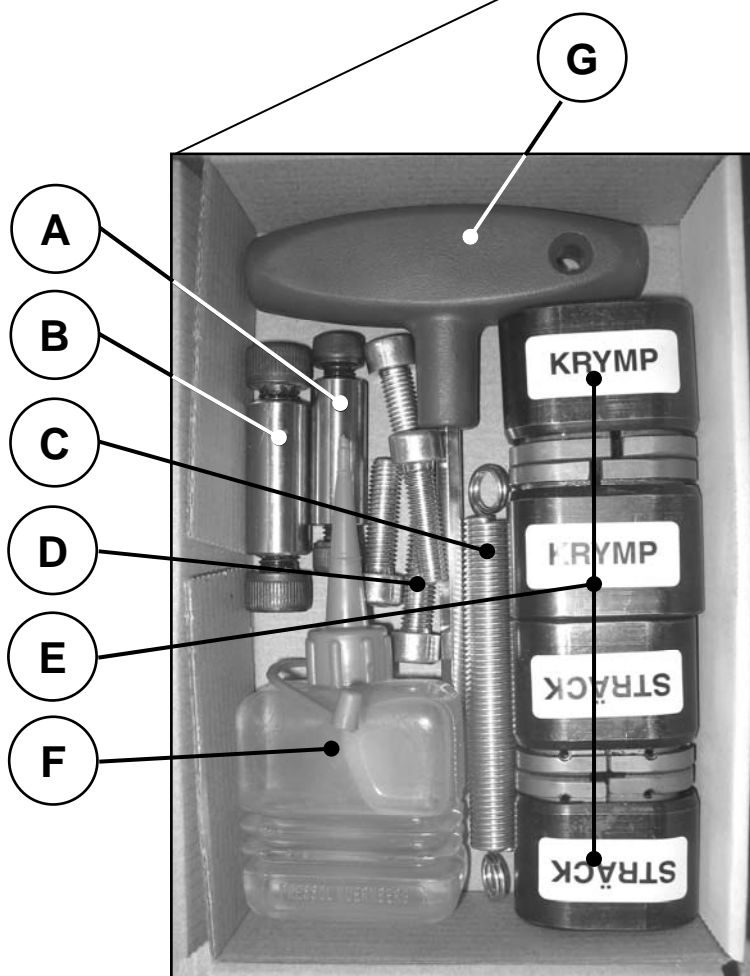
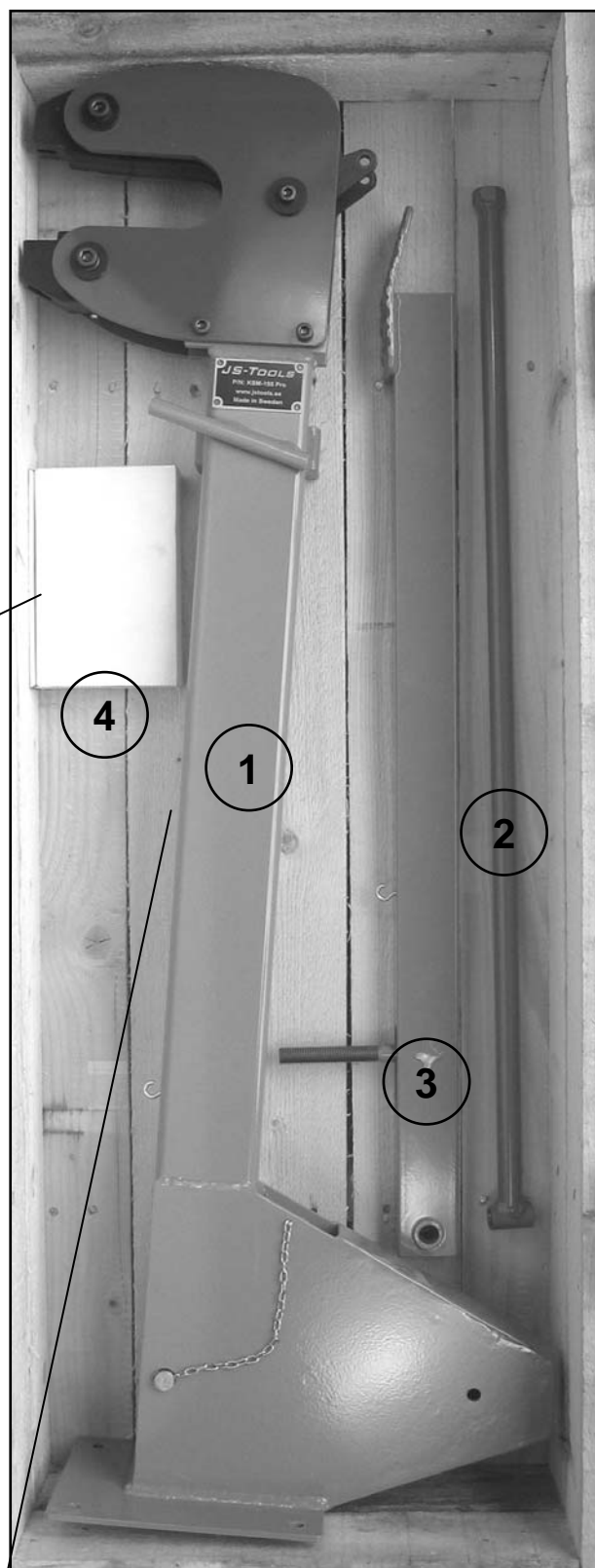
Copyright © JS-Tools

Table of Contence:

Delivery listing.....	3
Setup.....	4
Operation.....	5

Delivery listing:

1. Main unit
2. Foot pedal link
3. Foot pedal
4. Box with:
 - A. Axle with two M8 screws
 - B. Axle with two M10 screws
 - C. Spring for foot pedal
 - D. Four screws for jaws
 - E. Two jaws for shrink
Two jaws for stretch
 - F. Oli for jaws
 - G. T-wrench

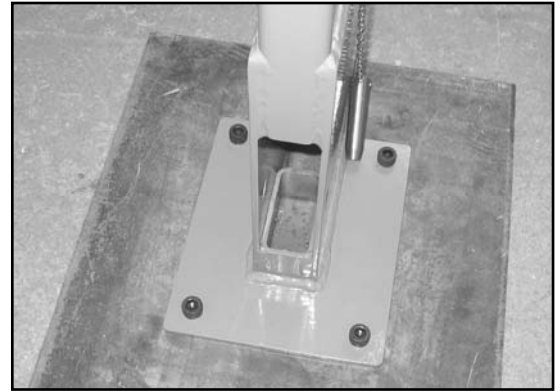


Setup

1. Place the main unit (1) on the floor in the place you like to use the shrinker/stretcher machine. We recommend to place it along a wall or along some other stationary equipment.

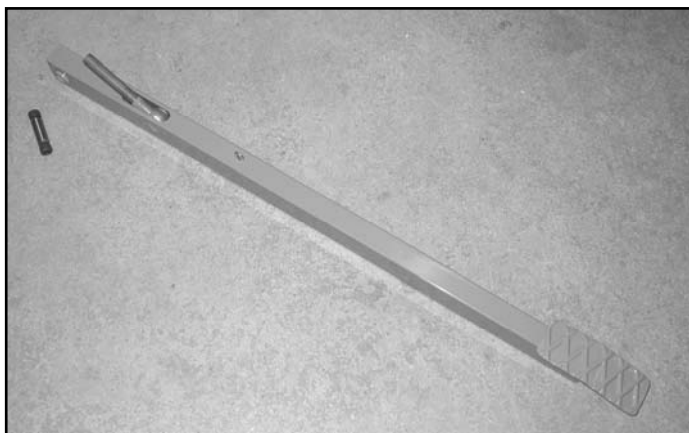


As an alternative you can mount the shrinker/stretcher on a Movable foot stand. Make sure the foot stand is strong so the head of the main unit do not move while working.



2. Use four concrete anchor plugs and four therefore suitable screws to secure the shrinker/stretcher. Make sure the unit is well secured in the floor or stand. The anchor plugs or the screws for this is not part of the delivery.

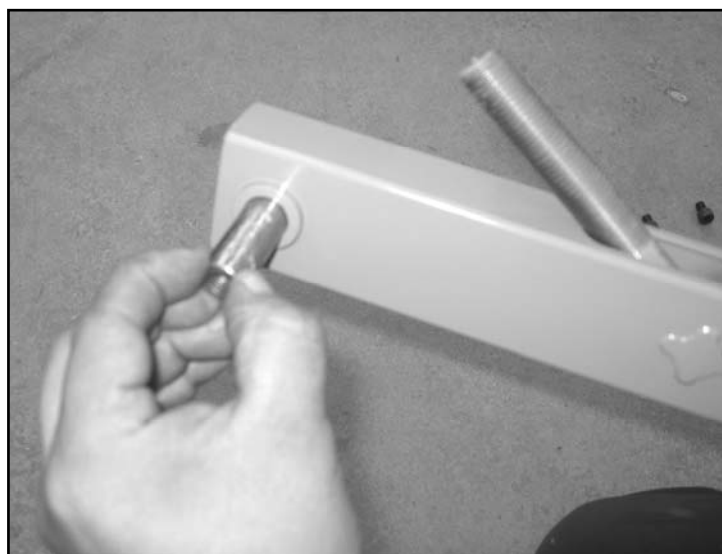
3. The next step is to mount the foot pedal (2) and axle with the M10 screws (4B).



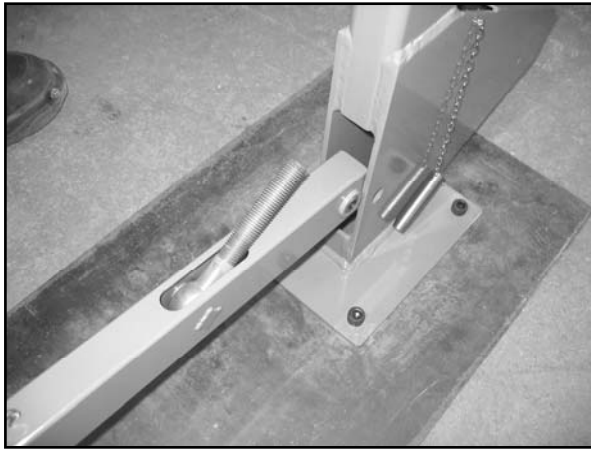
4. First grease the axle with some grease.



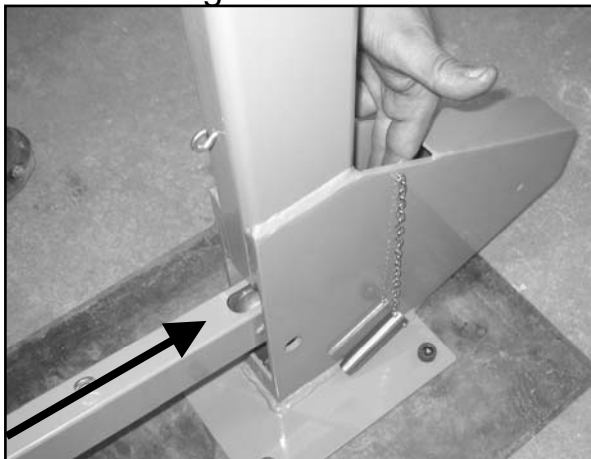
5. Then mount the axle in the hole in the end of the foot pedal.



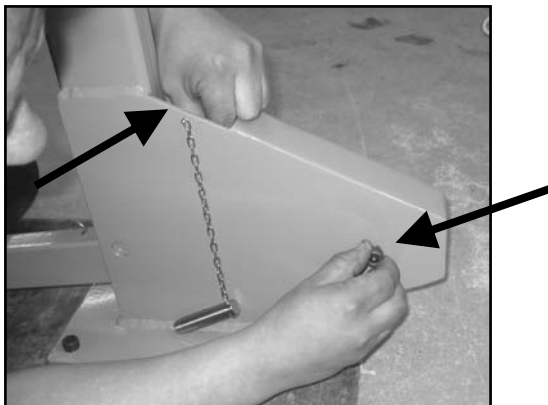
6. Place the foot pedal according to the picture.
Make sure the threaded link screw is pointing into the main unit.



7. Move the foot pedal in to the main unit and at the same time, with your other hand guide the threaded link screw up in the opening



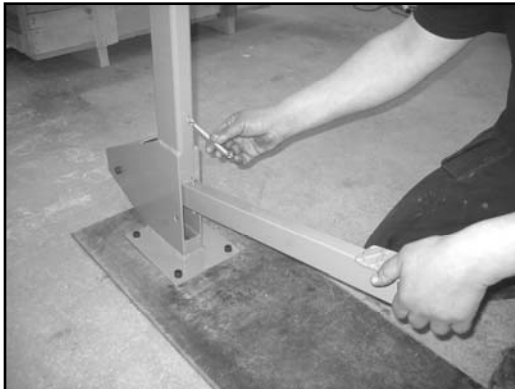
8. Then mount the two M10 screws for the axle and at the same keep the screw threaded link in the opening.



9. Mount both screws and tighten well.



10. Now mount the spring (4C), first onto the main unit then to the foot pedal.



11. Next thing is to mount is the foot pedal link (2) and the axle (4A) with the two M8 screws. Grease the axle with grease.



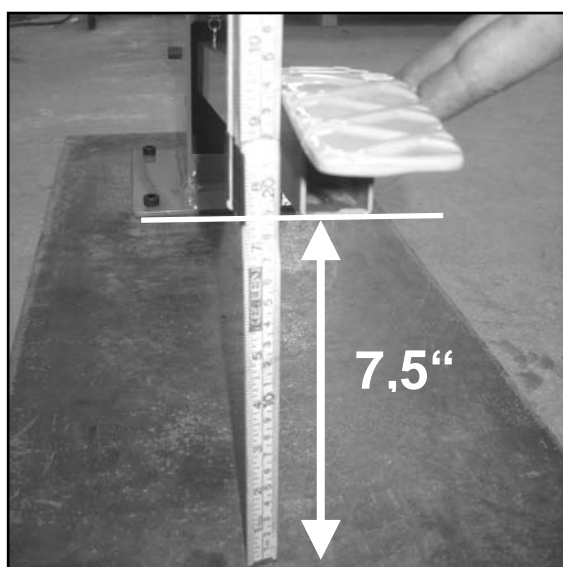
12. Then mount the axle in the hole in the end of the foot pedal.



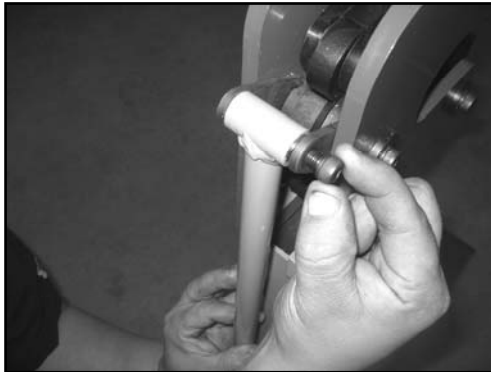
13. Mount the link to the threaded link screw and screw it in about 15 turns.



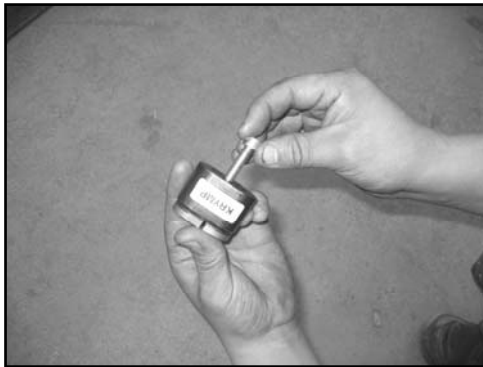
14. The length of the link has to be adjusted so that the height of the low side of the foot pedal is 7,5 inches, +/- 1/2 inch. To do this in the most easy way you put a distance under the foot pedal corresponding to 7,5" and then you adjust the exact number of thread turnings on the link until it fit the fork of the main unit head.



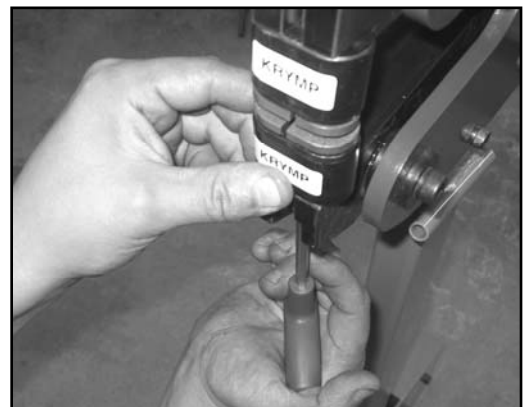
15. Then mount the two M8 screws for the axle and tighten well.



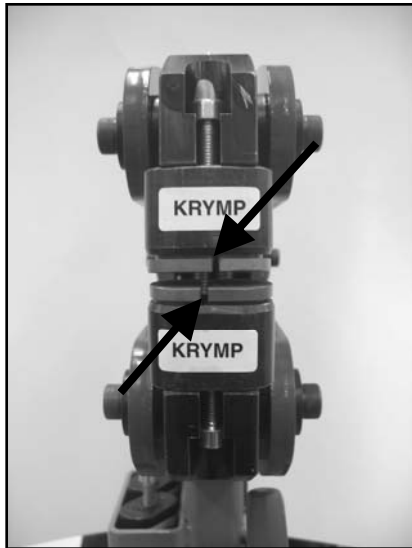
16. Now its time to mount the jaws (4E), first screw the screw (4D) into the jaw about 5 turns.



17. Then place the jaw one at a time with the text to the outside. Then use the T-wrench (4G) to tighten the jaws.

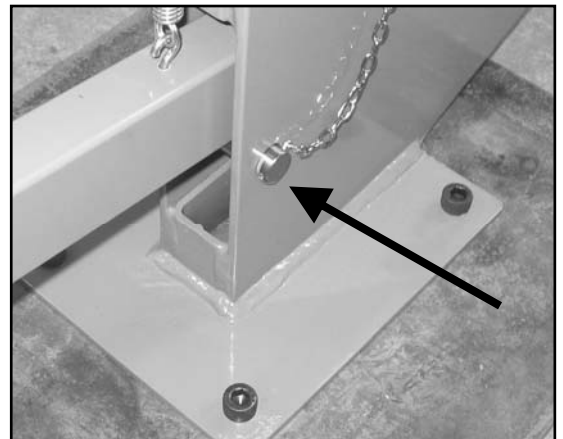
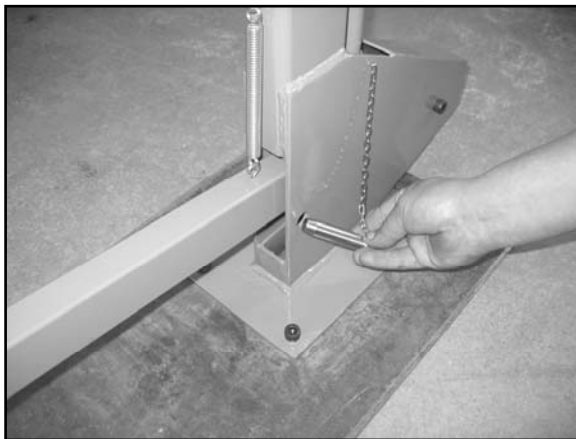


18. It is very important to use the same type of jaws, shrink/shrink jaws together and stretch/stretch jaws together. It is also very important to have the text to the same direction, Best with the text to the outside. On the shrink jaws the openings has to be placed as on the picture below.



Oil the jaws some every week or similar depending how much you use it.

19. When the shrinker/stretcher machine is not in use the securing pin has to be mounted to avoid injuries.



20. Place the pair of jaws not in use on the small shelf. Place the T-wrench in the holder in the stand



Operation

The principal function of this tool is to shrink or to stretch sheet metal up to 16 gauges (1,5mm). You can make radius down to 1 inch.

The principal operation is made by applying force with the foot on the foot pedal in a downward direction and at the same time apply the sheet metal work piece in between the jaws. When working you move the work piece between every time you press with your foot. By moving smoothly you will be able to make smooth shapes in quick and nice way.

To make the finish of the surface better an "English wheel" is very suitable.

WARNING!

Do not applying force on the foot pedel without having a piece of sheet metal in between the jaws. The jaws will go broke if no work piece is used. This miss usage can be detected afterwards, no warranty covered this.

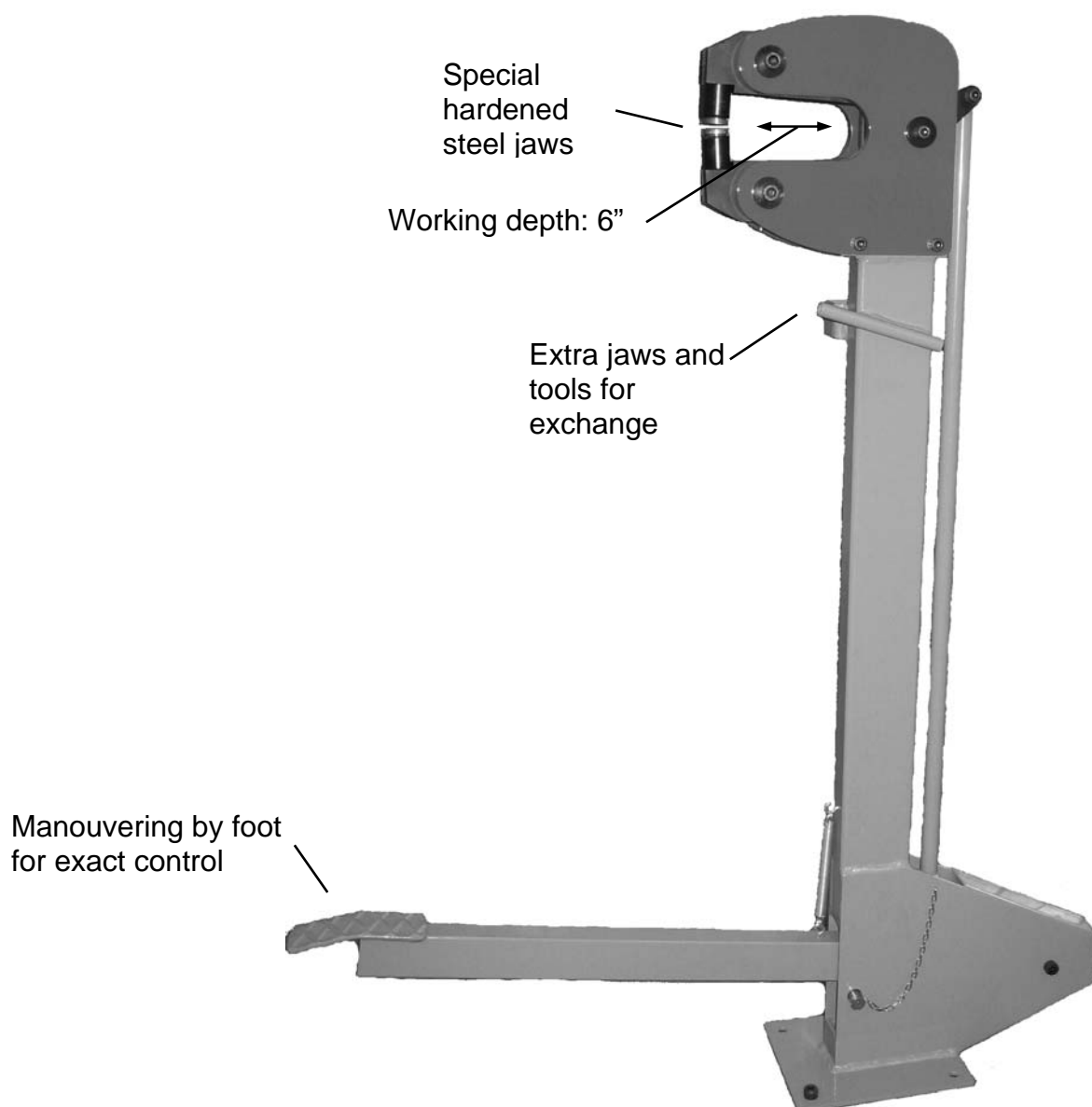


Technical data:

- Working depth: 6"
- Height: 44"
- With: 6,3"
- Depth: 30,3"
- Weight: 70 lb

Packing measurments & weight:

- 42,9" (L) x 19,7" (W) x 13,8" (H)
- 115 lb



JS-TOOLS

E-mail: info@jstools.se Internet: www.jstools.se